

PART OF N.E. 1/4 OF SECTION 16, T.6 N., R.1 W., S.L.B. & M.

8

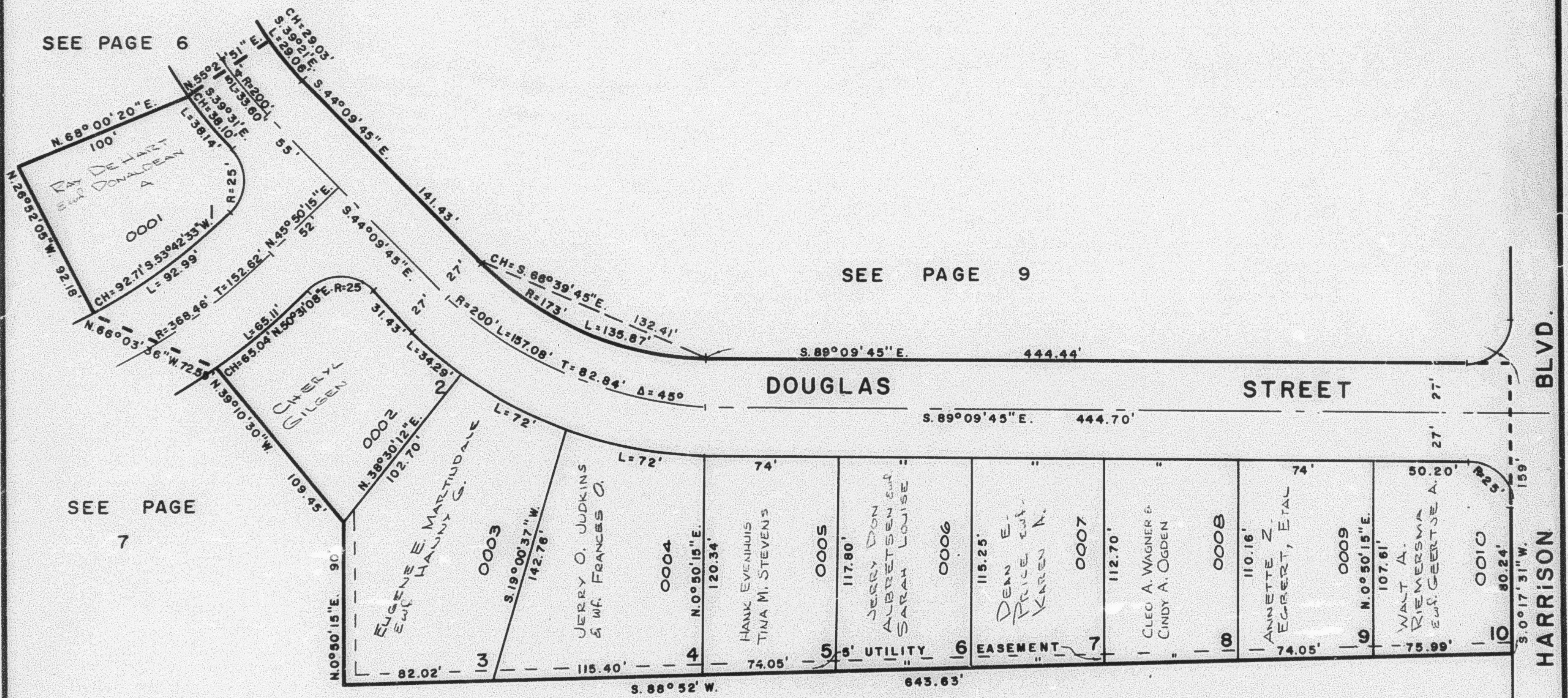
SHERWOOD PARK ADDITION No 5

TAXING UNIT: 25

IN OGDEN CITY

PREFIX: 12-008

SCALE 1" = 50'



SEE PAGE 2

NOTE: FOR COMPLETE ENG. DATA,
SEE ORIG. PLAT IN BOOK 11, PAGE 9